

Patients' experiences of abemaciclib plus endocrine therapy (ET) in adjuvant treatment of HR⁺, HER2⁻, node-positive, high-risk, early breast cancer (EBC): a preliminary qualitative interview study

Helena Harder, Val Jenkins, Lesley Fallowfield

Sussex Health Outcomes Research and Education in Cancer (SHORE-C), Brighton & Sussex Medical School, University of Sussex, Brighton, UK

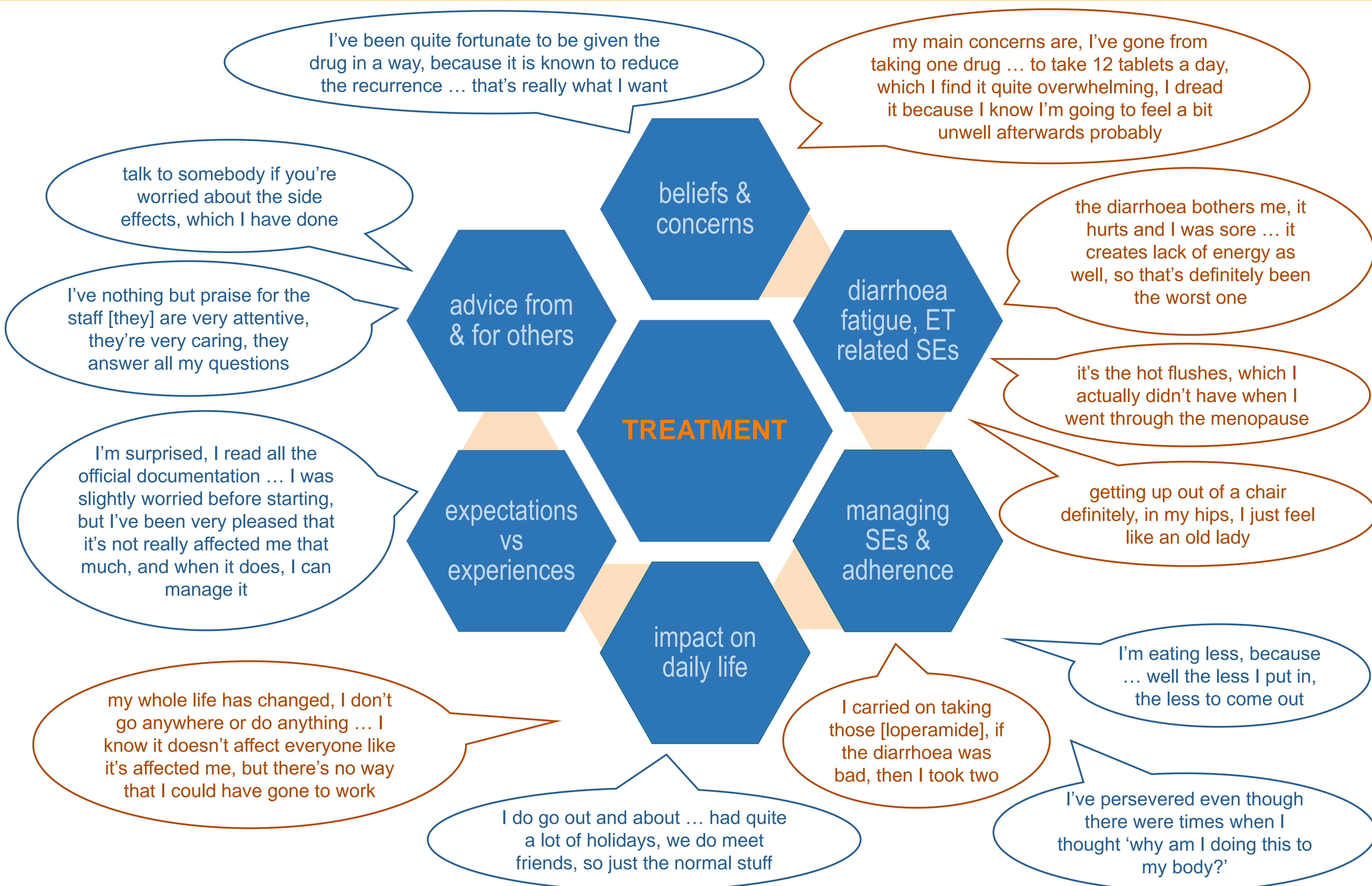
BACKGROUND

- Abemaciclib+ET approved in 2022 as adjuvant therapy for EBC with high risk of recurrence
- Diarrhoea is common side effect (SE)¹, particularly in first few months of treatment (83.5% vs 9% in ET only)²
- Real-world data on patients' experience and management of SEs in EBC setting are lacking

METHODS & PARTICIPANTS

- Observational longitudinal qualitative study exploring treatment perceptions, expectations and experiences
- 3 semi-structured interviews: before treatment, and at 4 and 8 weeks
- 5 EBC patients (aged 54-76) participated
- 15 interviews analysed using framework approach

RESULTS



CONCLUSIONS

This study provides initial insights in treatment perceptions and experiences. Patients' accounts of their experiences and impact of related SEs on functioning and well-being vary. Further research in the adjuvant setting is needed.



Investigator led study funded by Eli Lilly



h.harder@sussex.ac.uk



<https://shore-c.sussex.ac.uk/>



(1) Johnston S et al. Lancet Oncol 2023 doi: 10.1016/S1470-2045(22)00694-5 (2) Rugo H et al. Ann Oncol 2022 doi: 10.1016/j.annonc.2022.03.006